

Killamarsh Infant and Nursery School

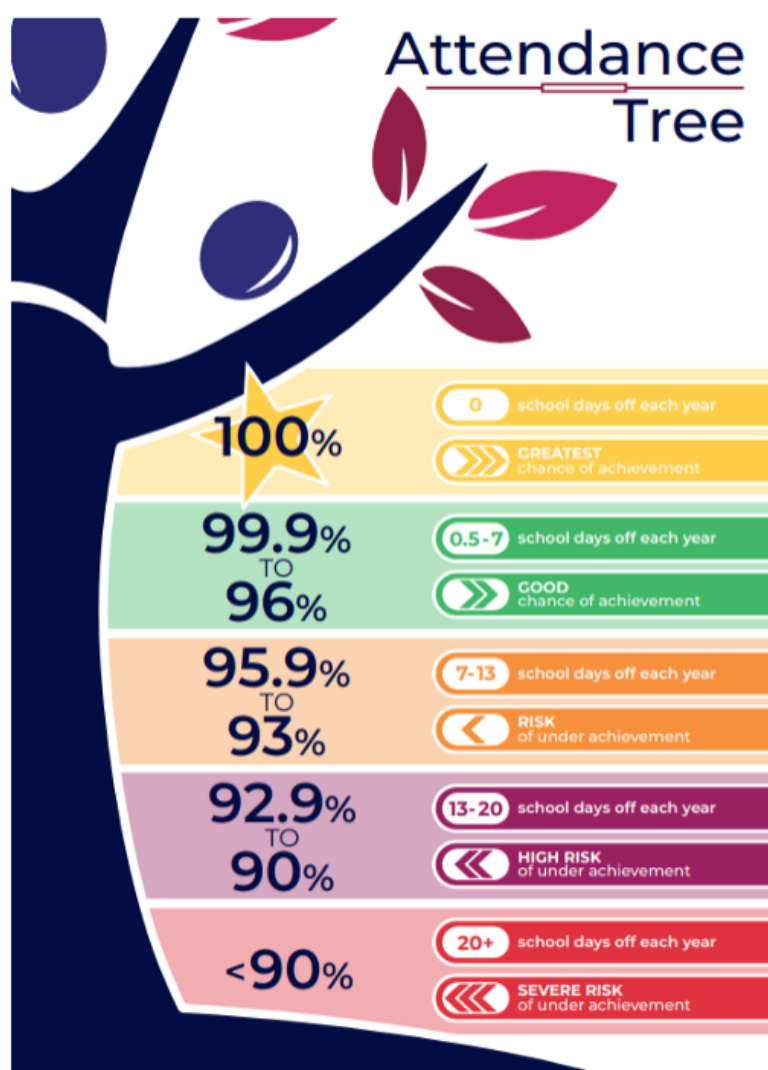
Spring Term 25

As part of our attendance strategy to improve and promote attendance we use our Attendance Newsletter. The aim of the newsletter is to:

- Continue to raise awareness of the importance of good attendance
- Inform parents/carers of the schools policies and procedures
- Inform parents/carers of the schools current attendance figure

Attendance Tree

Take a look at the Attendance Tree and see where your child's attendance is on the tree. We have some amazing attendance in school.



School procedures

Unauthorised Absence includes:

- Arriving late to school (after 9.20am)
- Shopping trips
- Birthday treat which results in their absence from school
- Absence from school with no reason
- Child off school as sibling/parent is unwell
- Child off school as sibling/parent has a medical appointment

We ask that Parents/Carers support good attendance in the following ways:

- Make school attendance a priority.
- Arrive at school on time – Class doors open at 8:40am.
- Contact the school to report each daily absence by 9.15am via telephone on 0114 2485852 (Please leave a message).
- Children should return to school as soon as they are able to do so after an illness.
- If you have ANY concerns about attendance, please do not hesitate to speak to the headteacher, Mrs Dolman.

Holidays in Term Time

There are 190 school days and 175 other days in the year that can be used for holidays and other occasions. The school academic year is set out a year in advance and available on the school website

A reminder that we DO NOT authorise holiday during term time. Leave of absence applications are intended for families where there is an exceptional circumstance that requires a child to be away from school. If you do feel that you have an exceptional reason for requesting leave of absence, please complete a leave of absence form, available from the school office.



Attendance Matters

